

THAMES DITTON TODAY

THAMES DITTON • WESTON GREEN • EAST MOLESEY



THE MAGAZINE OF THE
THAMES DITTON & WESTON GREEN RESIDENTS' ASSOCIATION

SPRING 2023



COLETS
HEALTH & FITNESS
WWW.COLETS.CO.UK

MORE THAN JUST A GYM

**Not-for-profit
& independent**

New members
welcome

**Options for
all the family**

Email today to
arrange a tour

INFO@COLETS.CO.UK



St Nicholas Road | Thames Ditton | KT7 0PW





THAMES DITTON TODAY

Published quarterly since 1970

Editorial Team

Libby MacIntyre & Sandra Dennis
editor@residents-association.com

Magazine Design

Guy Holman
14 Hayward Road, KT7 0BE
020 8398 1770

Distribution

David Youd
6 Riversdale Road
Thames Ditton KT7 0QL
020 8398 3216

Advertisement Manager

Verity Park
20 Portsmouth Avenue
Thames Ditton KT7 0RT
020 8398 5926

Contributors

You are welcome to submit articles or images. Please contact the Editorial Team well in advance of the next deadline May 5

Advertisers

Thames Ditton Today is delivered to an influential 5000 households throughout Thames Ditton, Weston Green and East Molesey. Contact Verity Park for rates for full page, half and quarter page advertising.

In this Issue:

News from the Residents' Association	7
Photo ID will be needed to vote in May's Local Election	12
Nature & Climate Photography Competition 2023	13
Update from your Residents' Associations' Councillors at Elmbridge Borough Council.....	14
Update from Nick Darby, Surrey County Councillor	17
1st Weston Green Scouts Christmas Tree service.....	19
A year of support to Ukraine	21
Why Residents' Association Councillors?	23
Your Residents' Association in Action	24
The future of Amateur Theatre post Covid.....	29
Introducing the Reverend Richard Rugg Vicar of All Saints	33
Knit and Natter' at Talbot House Café	35
Meet your distributors – Nell Nockles	37
Winter crossword solution	42
Spring crossword.....	43
Services, Clubs, Societies and Groups.....	44
Theatre in Thames Ditton	46

Cover: Kingfishers by Paul Furner. Winning entry in our 2022 Nature and Climate Festival Photography Competition

www.residents-association.com

Officers and staff of the Association are volunteers, but we must fund costs of this magazine, administrative and election expenses, and other expenses such as spring bulb-planting and village Christmas trees. The subscription is only £5 per household. If you can contribute more, please do so. Subscriptions can be paid via our website www.residents-association.com; subscriptions (in an envelope please) may be left at Boots Pharmacy, 14 High Street, Thames Ditton or Thorkhill Road Pharmacy, 94 Thorkhill Road, Thames Ditton. Or mail to Membership Secretary Peter Haynes at 6 Onslow Gardens, Thames Ditton KT7 0JJ. Thank you.

DanceCraft
MM

"We believe that by encouraging our pupils to love dance and enjoy their classes it will not only be exercise for the body but for their hearts and minds too."

Specialists in Dance & Performance training for Pre-school to Senior School aged children.

Classes in and around Esher.

Contact: Maria at mias33@hotmail.co.uk
Call or text to: 07800 860898
or visit our website www.mmdancecraft.com

PAINTERS & DECORATORS

We are residential painters and decorators with 20 years experience, we offer wallpapering, painting and paint effects for internal and external decorating

We work in a clean and efficient manner, causing minimal disruption in your home and come highly recommended

Contact Clive Hogg
to discuss your
decorating needs

020 8339 0712

m: 07957 582296

e: clive.hogg.ch@gmail.com



15 Hampton Court Avenue, East Molesey, Surrey, KT8 0BG

THE Green OUTDOORS

TREE CUTTING / PRUNING
HEDGE CUTTING
GARDEN SERVICES & CLEARANCE
TREE PLANTING / STUMP REMOVAL
PRESSURE WASHING
& MORE

CALL 07745145433
--- Free Quote & Advice ---



THAMES DITTON AND WESTON GREEN RESIDENTS' ASSOCIATION

Annual General Meeting

8pm on 21 March 2023
at the Vera Fletcher Hall

Agenda:

- 1. Minutes of the 2022 AGM:** Meeting and matters arising therefrom
- 2. Chairman's Annual Report:** Receive, discuss and adopt the Annual Report for 2022
- 3. Accounts:** To receive the accounts for the year ended 31 December 2022
- 4. Appointments:** To receive nominations and appoint officers and an auditor: President, Chairman, Vice Chairmen, Hon Secretary, Hon Treasurer, Auditor
- 5. Elections:** To adopt candidates for the Elmbridge Borough Council Election 4 May 2023
- 6. Resolutions:** To consider any resolutions submitted in writing to the Secretary by 21 February 2023
- 7. Guest Speaker:** Adam Chalmers, CEO Elmbridge Borough Council

President: Martin Wilberforce

7 River Avenue,
Thames Ditton 020 8398 4732

Vice President: Ruth Lyon,

11 Riversdale Road,
Thames Ditton 0208 398 3396

Vice President Tannia Shipley,

27 Lower Green Road, Esher 020 8398 2484

Surrey County Councillor: Nick Darby,

12 Basing Close, Thames Ditton 020 8398 2382

Thames Ditton Borough Councillors

Alex Batchelor,
12 Hayward Road,
Thames Ditton 07710 943140
Caroline James,
Laurel Cottage, 20 High Street,
Thames Ditton 07970 672723
Karen Randolph,
Deepfield, Giggs Hill Road,
Thames Ditton 020 8398 5005

Hinchley Wood & Weston Green Borough Councillors

Gill Coates,
The Oaks, Orchard Gate,
Esher 020 8873 3040
Janet Turner, 2 Montgomery Ave,
Hinchley Wood 020 8398 1565
James Crawshaw 07500 688632

Officers

Chair: Graham Cooke
23 Ashley Road, Thames Ditton 020 8398 8509
Vice-Chair: Libby MacIntyre
24 High Street, Thames Ditton 020 8398 5534
Hon. Treasurer: Christa Silverthorne
62 Thorkhill Road, Thames Ditton 020 8398 7101
Hon. Secretary: Florian Traub,
33 Portsmouth Avenue, Thames Ditton 020 8224 2880
Membership Secretary: Peter Haynes
6 Onslow Gardens, Thames Ditton 020 8398 6019

Conveners of Sub-Committees

Health and Community: Karen Randolph (see above)
Planning: Rhodri Richards,
Ditton Cottage, Giggs Hill Road,
Thames Ditton 020 8398 4962
Highways, Drainage: Andrew Roberts,
1 Boyle Farm Road, Thames Ditton 020 8786 6882
Flooding: Tony Thompson,
Willow End, River Bank, Thames Ditton 07736 677671



THE NEXT RESIDENTS' ASSOCIATION OPEN MEETINGS ARE

AGM Tuesday 21 March, 8pm – Vera Fletcher Hall

Tuesday 2 May, 8pm – Vera Fletcher Hall

ALL WHO LIVE OR WORK LOCALLY ARE WELCOME

☎ 02088732405 OR ✉ INFO@LITTLEBEARS.CLUB TO BOOK A VISIT



ENROLLING NOW!

Welcome to Little Bears Thames Ditton

- ✓ Flexible Childcare Options
- ✓ Qualified & Experienced Staff
- ✓ Safe & Inspiring Learning Environment
- ✓ Exciting Outdoor Play & Learning Areas

SCAN ME TO BOOK A VISIT



www.littlebears.club

News from the Residents' Association to end February



Residents' Association AGM

The 2023 Residents' Association AGM will be held on Tuesday 21 March at 8.00pm at the Vera Fletcher Hall.

Our guest speaker this year is Adam Chalmers, the new Chief Executive of Elmbridge Borough Council (EBC), who will talk to us about *'Taking Elmbridge Forward'*.



Adam Chalmers, Chief Executive EBC

Adam joined Elmbridge from Horsham Council where he was Director of Community Services. He has clear and refreshing views about the future direction of Elmbridge's services. This is an ideal opportunity to ask questions and put your views to Elmbridge's new Chief Executive.

Christmas Trees

The twinkling Christmas Lights in the High Street seem a long time ago now, but they certainly cheered up the dark winter evenings. Thank you to the residents and businesses in the High Street for supplying the trees, to the RA volunteers for preparing them all and to Dominic Barrington-Brown

and his team for putting them up and taking them down.

It costs money every year to have the Christmas Lights in the High Street and in February we held a fun, fund-raising quiz to contribute to the coffers. A jolly evening at the Vera Fletcher Hall was had by all, rounded off with a great raffle. Thank you to all the individuals and businesses that donated prizes.

Sales of the Silver Jubilee wrapping paper at Dittons Library also raised £123 for the Christmas Lights fund. Thank you to Helen and the library team.

Secret Gardens of Thames Ditton



Another important event that raises money for the Christmas Lights and the Garden of Remembrance is the Secret Gardens of Thames Ditton, which is returning this year on Sunday 11 June, 2 – 5.30 pm. Tea and cake will also be returning!

Tickets will be on sale from Secret Garden Florist (cash) and View Gallery (card) and on the day from Maybury Lodge, 24 High Street, Thames Ditton (cash only).

If you have a garden (or know someone who does) that you would like to open as part of this great community day, or you would like to volunteer to help, please contact Carolinejames1@gmail.com

Nature & Climate Festival 2023 8-10 September



This year's 'must see' event is our second Nature & Climate Festival on the weekend of 8-10 September. Building on last year's successful festival, we will be curating a mix of top-level talks, hands-on activities and entertainment themed around climate change and what we can do to make a difference.

This was a ground-breaking event last year and many hands make light work. If you would like to get involved as part of the creative team, please contact Cllr Gill Coates at gcoates@elmbridge.gov.uk

Christmas raffle funds defibrillator for Thames Ditton High Street



Tricia W. Bland, Trustee Thames Ditton Foundation and retailers Richard Curtis (centre) and Andrew Manning

In January the Thames Ditton Foundation (TDF) unveiled a defibrillator in Thames Ditton High Street, to the side of Craft My Day and opposite Budgens.

The funds were raised by a fabulous Christmas Raffle organised by TDF in conjunction with High Street retailers and prizes donated by local shops and businesses.

Research shows that if a defibrillator is used within 3-5 minutes of a cardiac arrest, the chance of survival increases from 6% to 74%. It is a great addition to the village.

Emergency throwlines at Albany Reach



Throwlines at Albany Reach, thanks to Nell Hickman

Thanks to the persistent efforts of resident Nell Hickman emergency throwlines have been installed on Albany Reach to assist those in difficulty in the river. EBC installed the signs and the throwlines and our RA Surrey County Councillor Nick Darby funded them from his councillor's allowance.

Nell has arranged for the RNLI to visit Albany Reach on 17 June, 12 – 4pm to demonstrate how to use the throwlines and give essential water safety education. With lifeboats visiting and crew prepared to act as target practice it will be a fun and an educational day so put the date in your diary. Further details will be available on residents-association.com

King's Coronation Party in the Garden on Sunday, 7 May

Thames Ditton Foundation (TDF) is planning a King's Coronation Party in the Garden on Sunday, 7 May with live music, home-made cakes and refreshments including Pimms and prosecco. It will also be producing a limited edition King's Coronation TD High Street Poster and Tea Towel. All profits will go to support TDF's local charitable initiatives. For further information, including tickets, contact tricia@the-blands.co.uk

Proposal to not publish planning letters of representation

In February we alerted RA members to a consultation by EBC on its proposal to stop publishing comments submitted on planning applications. The reason given was to avoid potentially large fines which may arise due to the inadvertent publishing of personal information. We have responded to say that this would result in a loss of transparency and democracy in the Council's planning-application process and decision making.

Planning applications

The appeal against the decision to refuse a planning application for an **Aldi store** on the old Guy Salmon site will be determined by a public inquiry (appeal reference - **APP/K3605/W/22/3313510**) scheduled to start on 20 June.

An application has been submitted to develop the site at **Molesey Ventures (2022/3525)**, Orchard Lane. This application for 74 residential units would represent a gross overdevelopment of the site and we have joined local residents in objecting to the proposals.

The Planning Inspector has dismissed all appeals for a new house at 28, The Island, Thames Ditton, concluding that

the dwelling proposed would unacceptably harm the character and appearance of the surrounding area.

EBC review of community centres

At our February Open Meeting we were updated on EBC's review of community support services. The review looked at how the service could be reimagined to ensure it meets the needs of the most vulnerable people in the community, particularly unmet needs, and ensure the best outcomes for the money spent.

There was some lively discussion regarding any potential changes at the Thames Ditton Community Centre, however no decisions have been taken and the next step is to involve local communities in co-designing the services they need.

Congratulations to Tony Willis of Weston Green for being awarded an MBE in the New Year Honours list. Since 2015 Tony has been Chair of Surrey Clubs for Young People (SCYP). SCYP supports a wide network of youth clubs in communities across Surrey offering safe spaces for young people to spend time with friends as well as appropriate programmes to help them grow and develop. <https://www.scyp.co.uk>

Make 2023 the year to try croquet

If you enjoy being outdoors and want to try something new have a go at croquet at Ember Sports Club. Members say "*it's a great way to meet new people, get some fresh air and it is ideal for families who enjoy playing games together.*"

A Tesco Community Grant received last year is enabling the club to invest in equipment for younger members. To find out more about the club and croquet taster sessions, email Simon Charrington on croquet@embersportsclub.org.uk



THAMES DITTON VILLAGE PICTURE HUNT COMPETITION



Stroll around our beautiful village and see if you can locate these. Simply write your answers in the space beneath, cut out of the magazine and drop it in to us at HJC for your chance to win a bottle of fizz and a £25 voucher to spend in View Gifts Thames Ditton. Entries by 24th April 2023. Our winner revealed in the next issue.

EBC to launch anti-idling campaign



EBC is launching **#IdleFreeElmbridge**, a campaign to raise awareness surrounding idling vehicle engines and the risk it poses to air quality. It wants businesses, communities, schools and residents to support the campaign and to pledge to keep Elmbridge idle-free.

Idling is where drivers leave their vehicle's engine running while it is stationary, perhaps while waiting outside schools, businesses, or shops. It is particularly noticeable in Thames Ditton High Street. Car idling produces up to 150 balloons of exhaust emissions per minute, containing harmful chemicals damaging air quality (it also wastes fuel).

Let's make a real difference and pledge to keep Elmbridge idle-free.

50th Anniversary for Esher French Circle

If you would like to socialise with friendly people and practise your spoken French check their website www.cerclefrancais-esher.uk

Residents' Association

www.residents-association.com
or follow us on Twitter @TDresidents

Dates for your diary

The Tale of Sleeping Beauty

Interactive Family Concert, Christ Church, Esher KT10 15 April, 3pm.
Tickets: www.harmonysmusicclub.com/sleepingbeauty

King's Coronation Party in the Garden

Sunday 7 May. Tickets £5
contact tricia@the-blands.co.uk

Secret Gardens of Thames Ditton

Sunday 11 June, 2 – 5.30pm

RLNI at Albany Reach

Saturday 17 June, 12 - 4pm

Nature and Climate Festival

8 - 10 September
Details to follow

Farmers' Market

Mercer Close Car Park (opposite the Library), fourth Saturday of the month

Weston Green Litter Pickers

Meet at Marneys pub on the first Saturday in the month at 10.30am

Thames Ditton Litter Pickers

Thames Ditton Tennis Club car park third Saturday of the month at 10.45

All Saints Weston Community Lunch

last Wednesday of every month. To book in, contact Alison Cruthers on **07957 347170** or alisoncruthers@yahoo.co.uk

Bereavement Café (open to all)

Third Tuesday of the month, 10.30 am - 12 noon. St. Nicholas Church Hall
Call **020 8398 9641** for more information.

'Knit and Natter'

Tuesdays 10.30am – 12 noon, Talbot House Café, St Nicholas Church Hall

Remember - Photo ID will be needed to vote in May's Local Election



The UK Government has introduced a requirement for voters to show photo ID when voting at a polling station at some elections. (It isn't required for a postal vote)

This new requirement will apply for the first time at the local elections on Thursday 4 May 2023.

Details can be found on EBC's website www.elmbridge.gov.uk/elections/voter-photo-id/

Forms of ID you can use to vote

You can use any of the following:

- passport
- driving licence
- blue badge
- Older Person's Bus Pass, Disabled Person's Bus Pass, Oyster 60+ Card, Freedom Pass
- identity card with PASS hologram (Proof of Age Standards Scheme)
- biometric immigration document
- defence identity card
- national identity cards issued by an EEA state



If you don't have an accepted form of photo ID

You can apply for a free voter ID document, known as a Voter Authority Certificate. You can apply for this at www.electoralcommission.org.uk/i-am-a/voter/voter-id

Alternatively, you can complete a paper application form and send this to Electoral Services at Elmbridge Borough Council.

You can still use your photo ID if it's out of date, as long as it looks like you. The name on your ID should be the same name you used to register to vote.

The deadline to apply for a Voter Authority Certificate for the 2023 local elections is 5pm on Tuesday 25 April.



We hope you recognise the efforts our **Residents' Association Councillors** make on your behalf and that you continue to support us at the election. But, whoever you support please remember your voter ID

Nature & Climate Photography Competition 2023



Following the success of last year's competition, we are delighted to announce the 2023 Thames Ditton & Weston Green Residents' Association 'Nature & Climate Photography Competition', sponsored by Killik & Co, the investment managers based in Esher.

There are four categories:

- 1. Local animal wildlife** - the fauna of Thames Ditton & Weston Green
- 2. Local plant wildlife** - the flora of Thames Ditton & Weston Green
- 3. Our changing climate** - Our local area in all weathers
- 4. Open category** - nature & climate in the wider world.

There will be a first prize (£50) in each category, plus up to three highly commended (£25) and a special prize for a photograph taken by someone under the age of 18.

You must live, work or attend school or college in Thames Ditton or Weston Green to enter, except for the Open category which is open to anyone.

The winning photographs will be on display at this year's Nature & Climate Festival (8-10 September) and the competition sponsors, Killik & Co, will host a special exhibition in their offices after the festival.

Full details of how to enter and the rules of the competition are available on the Thames Ditton and Weston Green Residents' Association website residents-association.com



Colets's Field by Yami Trequesser. Runner Up Local Surroundings Category 2022



Update from your Residents' Associations'

Thames Ditton Ward



Karen Randolph
TDWGRA



Caroline James
TDWGRA



Alex Batchelor
TDWGRA

£30k water safety package

Everyone was shocked and saddened by the three tragic deaths last year in the Thames. As part of its ongoing commitment to improving water safety in the Borough, EBC has announced an additional £30k package of measures to help with safety measures and awareness of the dangers of entering the river. This will include more throwlines and training to use them, free swimming lessons and free lifeguard training. Thanks to the tireless work of Nell Hickman in relation to water safety at Albany Reach, the RNLI will be at Albany Reach on Saturday 17 June with crew members and rescue craft to answer safety questions, demonstrate how to use throwlines and to highlight the dangers of the river.

£500k Cost of Living fund

The 'cost of living crisis' is impacting many people in the Borough. Citizens Advice is reporting an 80% increase in the number of people coming to them for debt advice and benefits.

The Council has set aside a £500k fund (from additional interest earned on its investments due to unforeseen interest rate

rises) to support residents through the issue. RA Cllr Gill Coates is on the steering group deciding how this fund is awarded.

Green Spaces Public Space Protection Order (PSPO)

The Council is proposing to introduce a PSPO on areas of our public green spaces to give more powers to control anti-social behaviour that spoils enjoyment of the area. In particular, it is proposed to tackle the long-stay 'fishing' that takes place at Albany Reach and Cigarette Island in East Molesey.

Overnight fishing by genuine anglers has been permitted in the past, but it has been abused by people staying for days and weeks at a time, creating a litter and excrement problem.

The PSPO is out for public consultation. We support the measures and would like to see it extended to include Emberside Recreation Ground as well. We urge residents to add their own views and experiences

ULEZ zone expansion

The Residents' Group in Council is against the expansion of the ULEZ zone united

Councillors at Elmbridge Borough Council

Hinchley Wood and Weston Green Ward



Gill Coates
TDWGRA



Janet Turner
HWRA



James Crawshaw
HWRA

without additional support for Elmbridge residents who will be adversely affected by the changes. Cllr Chris Sadler, Leader of the Council, has written twice to the Mayor of London with suggestions as to how the impact can be mitigated for residents here. Some concessions have been made but we would still like to see an extension of the scrappage scheme. The Thames Ditton and Weston Green Residents' Association's (TD&WGRA) position is available on our website, residents-association.com

Council Tax rise

Residents-led EBC has produced a balanced budget for 2-23/24 and the Council Tax increase for the Elmbridge portion of the tax (11% of the total) will be 2.98%, which equates to just 14p a week for a Band D property. This is well below inflation and reflects the prudent management of the finances by the Residents and Lib Dem coalition over the past few years (we have all read about Croydon and others, who are asking for 10% increases and higher.) Your Council Tax is split approximately as follows: Elmbridge - 11%; Surrey Police - 14%, Surrey County Council - 75%.

Planning objections

The Planning Committee recently voted in some changes to the process that will mean letters of objection and support for planning applications will no longer be available to view on the EBC website. The reason given is concern about breaching Data Protection regulations and risking a heavy fine. Your Residents' Association councillors do not support this move as we see it as undemocratic and unhelpful to local residents. The proposal has been out for public consultation and TD&WGRA has made its opposition clear. We will report back on the next steps.

£5k boost for High Street

The Council is awarding a grant of £5k for improvements to Thames Ditton High Street. Cllr Caroline James cjames@elmbridge.gov.uk would love to hear from local residents and businesses with their ideas for how this should be spent.

Please see page 11 to read about EBC'S anti-idling campaign which should also help the High Street along with improving air quality across the borough

AWARD WINNING ADVISORS IN THE HEART OF THAMES DITTON

Winners of the 2022 Tolley's Tax National Award for 'Best Single Office Tax Practice', LKA's expert team of Chartered Tax Advisors and Chartered Accountants have been supporting local residents with their tax and accountancy needs for over 10 years.



Based in Thames Ditton High Street, and in our brand new office on Station Road, our trusted team provide professional, tailored support to private individuals and small to medium-sized businesses with all aspects of tax and accounting, from advice and planning to tax returns.

If you are looking for a friendly, local team of Chartered Tax Advisors and Chartered Accountants why not book in for a **FREE** 15 minute discovery call.

"I've been absolutely delighted with the service I have received from LKA. They have a very special mix of being incredibly professional and also very personable and accommodating. I wouldn't hesitate to recommend them." Gemma, Surbiton

Contact us on **020 3915 8585** or email enquiries@lkassociates.co.uk.

Visit www.lkassociates.co.uk for more information.

Update from Nick Darby, our Surrey County Councillor



Surrey have decided to increase Council Tax by 2.99%. That is welcome as the increase is less than inflation. My concern is the undoubted pressure to continue to provide the services residents expect. Adult care costs Surrey County Council taxpayers more than £1m per day, Childrens' Services more than half a million per day.

The overall budget is again more than £1bn, a truly vast amount. My focus is ensuring value for money and avoiding waste. A good example of the latter is a new IT system to replace Surrey's HR and Payroll system going a total of £11m over budget.

Turning now to potholes, the recovery from the January bad weather seems particularly difficult this year. I have reported a fair number myself. The Highways teams do their best, but there are times when I feel more needs to be done.

For the Dittons, we had a particularly difficult one on Embercourt Road close to the Vera Fletcher Hall and a problematic section on The Drive to name but two. We were promised early last year that other holes nearby would be filled at the same time. Sadly, that is not my experience. The road from the Scilly Isles to beyond Sandown was awful, with sections still needing attention. Some have had temporary work, with the promise of a return "*within 40 working days*".

We have the recent announcement of lane closure for a time on Hampton Court Bridge, and the prospect of the long-delayed replacement of the Molemer Bridge, as I have warned before, hopefully not to coincide with Hampton Court Palace Flower Show.



Surrey County Councillor, (The Dittons) Nick Darby

I often receive requests for tree roots to be removed. One of the issues with that is possible damage to utilities. A potentially better solution with bigger tree stumps is to reduce their height, hollow out a section, and use those to plant bulbs or similar.

Home to school transport is slowly improving. The issues started when SCC did not arrange transport in time for the start of the school year and was compounded when parents were not kept informed. I have been heavily involved as a member of the Appeals Panel which makes the final decision in certain cases. A major review is taking place, profuse apologies from Surrey, and (I hope!) lessons truly learned. Related to that I am trying to help with bus transport to Esher High from Thames Ditton, so far with small success, but I hope for more.

Best wishes for Easter and the following Bank Holidays, including the Coronation.

**Nick Darby,
Surrey County Councillor for the
Dittons 0208 398 2382**

NEW MEMBERS WELCOME, ALL ABILITIES ENCOURAGED

EAST MOLESEY CRICKET CLUB

FOUNDED IN 1871, WE ARE A PREMIERSHIP CLUB AT THE HEART OF ITS COMMUNITY. PROUD OF OUR HISTORY AND EXCITED ABOUT OUR FUTURE.

IF YOU'RE A CRICKETER IN THE AREA AND LOOKING FOR A CLUB, OR SOMEONE WHO LOVES THE SPORT, REGARDLESS OF PREVIOUS CRICKETING EXPERIENCE OR AGE, YOU'LL BE WELCOME AT EAST MOLESEY CRICKET CLUB. JOIN US FOR THE 2023 SEASON.



FOR MORE INFORMATION VISIT: EASTMOLESEYCC.COM
OR CONTACT US VIA: MEMBERSHIP@EASTMOLESEYCC.COM

PROUDLY SPONSORED BY:



BIG SMOKE
BREW CO.



1st Weston Green Scouts Christmas Tree Service



The 'Great Christmas Tree Wall' at Sandown Park

When young people join 1st Weston Green Scout Group their parents usually get three surprises. The first comes when they realise that, as a charity run entirely by unpaid volunteers, we expect them to muck in and help at meetings, camps, and events. The second is when they learn this extends to dragging Christmas trees off the streets in January. The third is discovering that this can be great fun!

Local scout groups, including 1st Hinchley Wood, have long raised funds by selling and delivering Christmas trees in December. Some years ago, an enterprising leader at 1st Weston Green realised we could raise some money, and provide a valuable community service, by also collecting trees for recycling after Christmas. This turned out to be a brilliant way to raise funds for equipment and vehicles in a single concentrated effort, at a time of year when everyone fancies

some fresh air and exercise.

Each year, we face the challenge of collecting hundreds of trees in a few hours, in return for donations to the scout group. It starts with planning in October. Our online booking site opens in November. Things reach a crescendo at 8am on a Saturday in early January, when crews head out into the Dittons, Esher, Hinchley Wood and Molesey in our scout minibus and rented vans. This year, four vehicles rounded up 1,000 trees by 11am on Sunday.

Over the years we've honed the process to a fine art. Our parent volunteers form crews of three – driver, navigator, and lugger. The navigator has a challenging job, using an app to find and collect all the booked trees, while avoiding ones that have been left out for others to collect. The lugger's job involves getting cold, wet, tired, sweaty and hot (often all at once), but a good crew is

all about teamwork and nobody goes home without a feeling of satisfaction - and lots of pine needles in their clothes.

Recent years have thrown up some major challenges. In 2021 we had planned a Covid-safe collection, but had to cancel at short notice when we were plunged into lockdown. For 2023, after Garsons Farm regretfully decided they could no longer take our trees, we had to devise a whole new way to dispose of them.

Sandown Park very generously provided us with land to use as a collection site. There, we piled up the trees into a great wall, 80 meters long. Then, Surrey-based Greenwood's Tree Contractors brought along a huge forestry chipper and in just two hours turned the trees into 10 tonnes of wood chips. An articulated lorry took them off to be used as fuel for green energy generation at Kent Renewable Energy's

combined heat and power plant.

In summary: discarded trees put to good use, an enjoyable weekend of teamwork, and funds raised to provide adventures and life skills for local young people. If you'd like us to collect your tree next year, make a note of our booking site www.collectmytree.co.uk



A lugger at work!

Nigel Harris

Alan Greenwood & Sons

Independent Family Funeral Directors



Latest Jaguar or Mercedes Hearses and Limousines

Quality Service 24 hours a day

Home visit arrangements

Golden Charter Pre-paid funeral plans

We will not be beaten on price



1 The High Street
Claygate
KT10 0JG

57 Fleece Road,
Long Ditton
KT6 5JR

13 Molesey Road
Hersham
KT12 4RN

259 Ewell Road
Surbiton
KT6 7AA

01372 377 377

020 8398 0012

01932 260 046

020 8399 4455

Visit Our Website for Full Details of Our Services and to View Our Obituaries

www.alangreenwoodfunerals.com

A year of support for Ukraine



This time last year Kingston Liberal Synagogue (KLS) at Long Ditton was a focal point for local people who wanted to donate items to help people in Ukraine. Between late February and April they collected around 800 boxes worth of donations and worked with the Ukrainian restaurant Prosperity in Twickenham to transport them to people in need.

Rebecca Singerman-Knight from the synagogue said *“one of our members immediately felt we had to do something, we had a few volunteers to start with and then it got its own momentum and we had volunteers every day for the first few weeks sorting and packing donations. Later in the year our focus was a fund- raising concert which as well as giving people a chance to hear Ukrainian music raised £4,500.”*



Ukrainian music concert at KLS



Just some of the donations for Ukraine

Many local organisations, businesses and churches have been involved over the past year in showing support for Ukraine, from the Thames Ditton Tennis Club fund-raising Quiz supported by HJC to View Gallery selling cards with the proceeds to Ukraine. Ditton Reach vets collected animal food and supplies.

Local people have opened their homes in the Homes for Ukraine scheme. Figures from Surrey County Council show that 423 Ukrainian guests have arrived in Elmbridge and 212 households had put themselves forwards as sponsors.

One Ukrainian guest has said *“I am so happy to be here in Thames Ditton, you have been so kind. I hope soon that the war will be over.”* We hope the same.

Peace

Hope

FUNERAL DIRECTORS AND MEMORIAL STONEMASONS

OUR FAMILY HELPING YOUR FAMILY

For over 240 years, eight generations of the Lodge Family have been privileged to help local families in their time of need. We provide all funerals, whether modern, traditional, green or alternative, with care and compassion.

THAMES DITTON

37 High Street 020 8398 4586

Branches also in Esher, Molesey & Surbiton

www.lodgebrothers.co.uk



Robert, Chris, Andrew & Michael Lodge



"The staff at Lodge Brothers have been sympathetic, understanding and supportive. We will be forever grateful for their support"
- Mr Robinson



ASK ABOUT OUR
PRE-PAYMENT
FUNERAL PLANS

Lodge
BROTHERS 1780
the family you can turn to

FLORAL TRIBUTES • FUNERAL PLANS • WILLS & PROBATE



cards, chocolates and sensibly priced gifts for littler pockets



love thames ditton
shoplocal

design: www.thesetupdesign.com thames ditton

view
thames ditton

34 High Street Thames Ditton KT7 0RY 020 8972 9706

@ViewGifts

www.view-gifts.com

Why Residents' Association Councillors?



Local elections will soon be upon us when we will be pressed to vote for a national political party, or because we don't like one or other party.

In Elmbridge we can be different. When talking to newcomers in Thames Ditton and Weston Green I am often asked "*How do Residents' Association Councillors differ from those in the national political parties?*" People moving here, particularly from London, with its strong party-political councils, find it strange that Residents' Associations have candidates for Borough and County council elections and regularly get them elected! When I tell them that of the 48 Elmbridge Councillors, 20 are from the Residents' Group, they realise we are not just a fringe group. In fact since 2019 we successfully led Elmbridge Council through the tough years of the pandemic, maintained all our important services – (refuse collection, community day centres etc.) and initiated new climate change measures, including adding solar panels to the roof of our Excel Leisure Centre and community centres etc. This provides thousands of hours of electricity, heats the Excel swimming pool and protects Elmbridge Council from fluctuating energy prices.

From 1992 to 2006 whilst under the Residents' Group leadership, Elmbridge Borough Council was awarded 'Excellent' status, putting it in the top 10% of all councils in England. During this time, we built the Excel Leisure Centre, introduced recycling, enhanced older people's services, children's playgrounds and our arts programme.

Independence and Accountability

We can't underestimate the value of having Residents' Councillors on Elmbridge Council compared with national political party ones. The main differences are independence and accountability. Residents' Councillors are not attached to a national political party, which has a whip that overrides local concerns, where ideology, direction, and sometimes even newsletters, come from national party headquarters; who seem more interested in fighting the next General Election than delivering council services.

Since 1934 the Thames Ditton & Weston Green Residents' Association has put up candidates in order to have a voice i.e. a vote on the Council committees which make decisions. When in 2009, the Conservative Administration proposed to close the Ember Centre for the Retired (now the Thames Ditton Centre for the Community), it was our Residents' Association which led the successful campaign to save this vital facility for older residents. They were only able to do this because we had RA Councillors on the relevant committee, able to alert us in time to proposals to close the centre. The lesson from this is that without Councillors on the Council decision making committees, a Residents' Association is toothless.

Defending our environment means constant vigilance

We are distinctive in our consistent support for saving our precious Green Belt, open spaces and heritage. All too often the political parties vote for developments which would irretrievably change the character of our Borough.



Your Residents' Association



Nature and Climate festival weekend. Enabling people to help the planet

Regular Open Meetings to engage with the community on important topics

Constant vigilance Conservation Belt and our Th

Notified residents of key planning applications

Twitter residents

Pressed SCC to improve maintenance of Highway Trees

Active R.A Councillors representing residents helping residents with issues

Website maintained as resource for all residents

High Street Christmas trees & lights

Supported residents' objections to inappropriate development

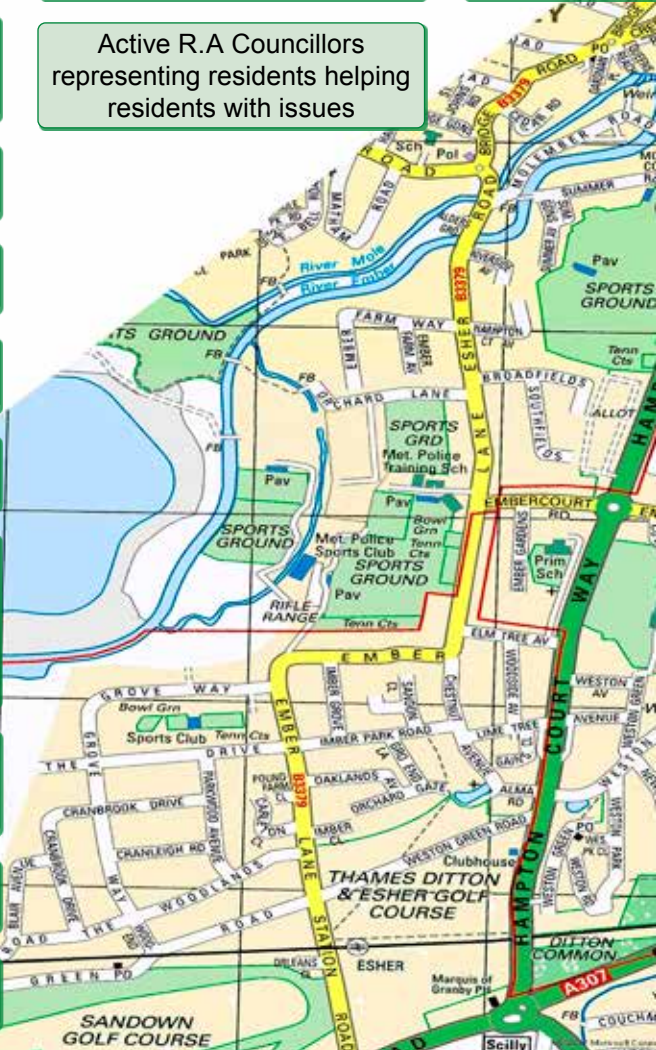
Supported Thames Ditton High Street retailers

Continuing pressure for maintenance to prevent flooding at Esher station, and to resolve other long-standing flooding problems

Lobbied for bridge maintenance at Esher Station bridge

Vegetation management at Milbourne Pond

Road resurfacing in Thames Ditton and Weston Green



Action in Action 2022-2023



ance to protect
Areas, Green
ames Riverside

New emergency throwlines at
Albany Reach

5000 copies of Thames Ditton
Today distributed quarterly in
Thames Ditton, Weston Green
and Molesey

to keep
informed

Secret Gardens of Weston
Green 2022

Flood Action Committee liaison
with Enviroment Agency and
Thames Water

Jubilee Picnic for the
community

Planted spring bulbs,
maintained flower beds at
Fountain roundabout

Supported The Theatre at the
Vera Fletcher Hall

Active Litter Picking
Groups in Weston Green
and Thames Ditton

Supports monthly
Farmers' Markets

Laid wreaths on War Memorials
on Remembrance Sunday

Continued support to
Foodbank collection points

Responded to local
government consultations



Conservatives voted en-bloc for the massive Jolly Boatman development opposite Hampton Court Palace, over the heads of ward Councillors whilst disregarding 3,000 local petitioners. They also all voted en-bloc to build two hotels on Green Belt land at Sandown Park and Moore Place, Esher. Whilst Liberal Democrats and Conservatives voted together to support building 26 dwellings on the site of one house at Merrywood in Weston Green, against massive local opposition.

Residents' Association Councillors played an important part in getting the proposed housing development rejected on the Thames Ditton Tennis Club site, and the proposed flats at 29 High Street, Thames Ditton, which would have harmed the character and appearance of the Conservation Area and meant loss of employment.

We work with our residents

We do not work in a vacuum. We communicate via our Thames Ditton Today

magazine and excellent website. Unlike the national political parties, we also hold regular Open Meetings where local people can air their views on planning proposals and other matters of concern, from major traffic proposals to dog fouling and litter. With their varied backgrounds and experience our Councillors are the best briefed in the Council. They take a practical approach to local issues, never forget that we are spending public money on public services and aim to deliver value for money.

RA Councillors are not a 'front' for any other group but have always stood on their own merits and policies, believing that at local level Councillors should be accountable first and foremost to their electorate and not to a national party.

Ruth Lyon

Vice-President

and Elmbridge Councillor 1973- 2018

INDEPENDENT, TRUSTED FINANCIAL ADVICE IN THE HEART OF THAMES DITTON

Knight James' are a friendly, local business offering trusted, impartial financial advice.

Our experienced team are able to offer advice in the following areas:-

- Mortgage & Lending Services
- Investment & Pension Advice
- Portfolio Management
- Retirement & Tax Planning
- Corporate & Employee Benefits
- Commercial Insurance

Contact us today to find out how we can help to put you on the right financial path.

MORTGAGE SERVICES

COMMERCIAL INSURANCE

WEALTH MANAGEMENT

INVESTMENT & PENSION ADVICE

Call 020 8398 6677
www.knightjames.com

6 Station Road, Thames Ditton, Surrey KT7 0NR

knightjames
 Wealth Management

Elmbridge Museum's 'Coronation Memories' project: can you participate?



1953 poster souvenir of the Coronation of Elizabeth II. 230.1971.
Reproduced by permission of Elmbridge Museum.

The June celebration of Queen Elizabeth II's Platinum Jubilee saw street parties, TV programmes and royal events, with many coming together to talk about the monarchy.

Less than a year later, in May 2023, there will also be street parties and families gathered around television sets. This time it will be for King Charles III. His Coronation will be the first in Britain since his mother's ground-breaking ceremony in 1953.

To mark the new King's Coronation and the end of a momentous year for the British monarchy, Elmbridge Museum is adding to its collection by recording spoken personal memories of the 1953 celebrations.

We are looking for five participants who live or lived in Elmbridge and remember Queen Elizabeth II's coronation in 1953. You don't have to have been present at the London parade: any memories - be they of street parties, watching the ceremony on TV, or attending Coronation fetes - are valid,

and we'd love to hear them. The Museum will record a private interview with every participant, giving each the opportunity to talk to us about their unique personal experiences. This is a chance to contribute a valuable first-hand account to the Museum's collection and subsequent Jubilee exhibition that we will be launching in May, while also creating a unique personal recording of your memories to take home and treasure.

If you'd like to be a part of this new project, please e-mail ebcmuseum@elmbridge.gov.uk or call **01372 474568** for further information.

The five interview slots will be given on a first-come-first-served basis, but we will try to ensure everyone who would like to be involved is able to contribute in some way.

Amy Swainston

Exhibitions & Interpretation Officer,
Elmbridge Museum *Images courtesy of
Elmbridge Museum, Elmbridge Borough Council*

TJ Bathrooms



Based in Cobham, we complete work across Surrey. Fitting Bathrooms, Kitchens and more with over 25 years experience we are more than happy to help.

Contact us by phone 01932 866471 or email tjbathrooms@hotmail.com for more information.

121 Anyards Road, Cobham, KT11 2LJ

The future of amateur theatre 'Post-Covid'



A perspective from the Ember Players Theatre Company

The Ember Players Theatre Company is an amateur theatre group who rehearse and sometimes perform at the Ember Sports Club, just off The Drive in Esher.

The Ember Players Theatre Company was founded in 1949 and will have its 75th anniversary next year, but will it be able to survive to celebrate that milestone? Amateur theatre was facing challenging times before Covid because of reducing numbers of people wanting to be involved, and also smaller audiences, which obviously affects the financial viability of productions. Then we had the two-year pandemic where we had to cancel all our plans. However, we are pleased to report that we bounced back to life with an inventive, funny and energy-filled, sell-out production of *'A Christmas Carol'* at the end of 2022 at the Barn Theatre in West Molesey.

For many years we have performed at the Cecil Hepworth Playhouse in Walton-on-Thames, an Elmbridge owned theatre, but we have varied our recent performance venues to attract new audiences.



Anne Segall (left) and Elaine Sesemann with puppets 'Tiny Tim' and 'Young Scrooge'



Ember Players in *'A Christmas Carol'*

We don't know why audiences are only slowly returning to amateur theatre after Covid, but perhaps people have just got used to finding their entertainment at home?

Against this backdrop we are hoping to return to the Ember Players spiritual home, the Vera Fletcher Hall, for our next production, in October 2023.

The Ember Players Theatre Company has always produced theatre of the highest possible quality and has never shied away from challenging pieces tackling important issues of our time, and demanding staging and sets. I asked the three most recent directors of Ember Players productions to tell us about the production they are most proud of and why.

Steve Clunn, the director of *'A Christmas Carol'* chose *'What the Butler Saw'* by Joe Orton as the favourite play he has directed. He said *"the revival of this black comedy*



THAMES DESIGN & BUILD

Call us on 020 8398 9252

Email: info@thamesdesignandbuild.com
www.thamesdesignandbuild.com



ARE YOU CONSIDERING AN EXTENSION, LOFT CONVERSION, OUTBUILDING, OR ANY OTHER ALTERATION OR ADDITION TO YOUR PROPERTY?

Thames Design and Build provides architectural design and/or construction services to clients across Surrey, with over 80% of our projects being Elmbridge based.

We offer:

- A free consultation to discuss your ideas and advise you on the possibilities and permissions
- A fixed quote for all stages of architectural work
- A fixed quote for your build – we are equally happy to provide a build quote in respect of your existing designs

We have a large portfolio of clients within Elmbridge, so whatever your plans are, we should be able to show you a comparable completed project.

Please email us at info@thamesdesignandbuild.com or call us on **020 8398 9252**



"We were recommended to TDB for their architectural design service. We liked the clarity of the process and costs, and we were delighted when our plans were approved. We asked three firms to quote for the build, and while TDB didn't come out the cheapest we again felt that we knew exactly what was included and we thought that the price was fair. We expected some stresses during the building project, but the TDB team were great to work with, and ultimately everything was finished on time, and there were no surprise costs. Overall, we couldn't be more pleased". Mrs SM, Surbiton



Ditton Garages, Southville Road, Thames Ditton, KT7 0UL

presented many technical challenges for the director and cast. The required comedy timing was extremely demanding, but it was great fun to rehearse and extremely rewarding particularly with the copious amounts of audience laughter during the performances.”

Anne Segall said “My first direction of ‘The Laramie Project’ by Moises Kaufman stands out for me, because it tackles the real murder of a young, gay man and local people’s reactions to the event. It was both challenging for us and brought to life a societal issue that is very much front and centre of our world, today.”

Elaine Sesemann chose ‘Bothered and Bewildered’ by Gail Young as the production she is most proud of. She said “This play tackled the subject of caring for a mother with dementia and brought to life her memories and secrets from the past. The

play is beautifully written and is enhanced by the humour created by the imaginary friend, Barbara Cartland, a vision in pink, who becomes the mother’s confidante. It was such a moving piece about such an important issue of our time. I am so proud of bringing it to the stage.”

The company is very blessed to have several excellent directors, a team of talented actors and an outstanding backstage team but the workload for this small team is getting ever more demanding as the numbers of people wanting to be involved, especially in backstage roles such as organising costumes, props, publicity, lighting, and sound seems to get smaller year on year.

If you would like to be involved please email the Ember Players at info@emberplayers.co.uk

Elaine Sesemann

Stuart James Antiques

We are part of the largest recycling network in the world!

We sell 18th to mid 20th century furniture, mirrors and decorative items, together with modern lighting and handcrafted candles in a myriad of colours.



design: www.thesetupdesign.com thames ditton

Open 7 days a week from 11.30am to 5pm

77 Bridge Road, East Molesey, KT8 9HH
Instagram  @StuartJamesAntiques

07808 739857

9.6

Average Group
Review score 2022
carehome.co.uk*

Average Carehome.co.uk Score 9.6

*carehome.co.uk scores are based on independent reviews with a maximum score of 10. Rating correct as at 10/01/2023.



Read Frank's story



TRUST US TO GET FRANK A GREAT CUP OF TEA

We found out what Frank was passionate about



Who Cares? We do, and we always will

Thameside care home, West Molesey, Surrey, KT8 1TF

Call 02039447941 Visit anchor.org.uk/Thameside

Linwood care home, 9 Mercer Close, Thames Ditton, KT7 0BS

Call 02045023842 Visit anchor.org.uk/Linwood

Introducing the Reverend Richard Rugg, Vicar of All Saints Weston



Richard, how did you become a Vicar?

I've worked for the church for most of my adult life – I spent a few years working in IT after university but didn't really enjoy it. I left for the more exciting world of working with children and teenagers in a local church before moving on to ministering to people of all ages and becoming ordained, more than 10 years ago now.

All Saints is the first time I've been Vicar. I've spent the last six years just down the road as an associate Vicar (like a deputy head) at Holy Trinity Claygate, before moving the two miles to Weston Green in November last year.

What have you and your family enjoyed so far about living in Weston Green?

We've lived in the area for a number of years and we've always really loved it. It's great living close to central London but still having green areas and spaces to go walking and running in. It is the same in Weston Green as in Claygate.

Perhaps the biggest reason we've wanted to stay local is the fantastic sense of community there is in this area. People care about what is going on in their neighbourhood and look out for others. We've felt this welcome and sense of care in moving to Weston Green.

Another blessing of being Vicar at Weston is getting to live in the vicarage – which is a little bit bigger than the last place – both the house and the garden. Both my children now have their own space and the cat is enjoying the garden – when it's not too cold! The



The Reverend Richard Rugg

vicarage is also in a great location, next to the church, near the Co-op and really close to Marney's! What more could you ask for?

What do you think God can bring to family life in this challenging world?

A simple answer to that question is hope and peace in turbulent times, although God is so much more than that. It's no secret that the last few years have been more challenging for a majority of people than many times in recent history. We seem to be lurching from one crisis or piece of bad news to another so quickly they are piling on top of one another. In times like these having an anchor for your soul is really important, a place and relationship where you feel secure, loved and valued no matter what. God offers this to all who ask and promises so much more to us. God guides with a wisdom, gentleness and steadiness that you won't and can't find anywhere else.

How do you think the church is still relevant for young people today?

I believe that what I said about God and the world is true no matter what your age.

Worry and anxiety over the future of the world is more prevalent among the younger generations than adults, and God welcomes all people to come to him no matter what their age. The Bible tells of an event when Jesus rebukes his own disciples when they tried to stop children from coming to see him, so we know God definitely welcomes the young!

Often, when people hear the word 'church' they think of the building - and All Saints is indeed a lovely building - but the building isn't really the church, it's the people that meet together in it. Church at its best is like a big family, all meeting together for a big celebration with people of all ages present, from young to old. All knowing they are welcome and everyone having a part to play.

Over the course of this year at All Saints we will be making some changes to Sunday services and our midweek activities in order to be better at welcoming and serving the needs of all generations living in our community.

Please do watch out for news over the coming months and have a look at our website to see what is on offer www.allsaintsweston.com

If someone is thinking about coming one Sunday what should they do?

Well, just come along. We are generally a friendly group of people and will do our best to welcome you nicely no matter what event you come along to, and we won't force or make you do anything you don't want to! If you go to our website it gives details of the services and activities on offer so I hope you find something that interests you. I aim to make whatever we do helpful and relevant to everyday life - because God really is interested in whatever it is that is going on in your life. I look forward to meeting many of you soon, I hope.

Interview by Louise Russell

HOUSE HERITAGE

Curious about your property's history?

We provide a unique in-depth service, professionally researching the history of your property from construction to present day, uncovering the lives of the previous occupants



Contact **Sarah** for a free consultation
Email: house_heritage@outlook.com
Call: 01380 859987 / 07735 041826
Visit: www.house-heritage.com



THE ART BUYER GALLERY THE SPRING SHOW Opening 4th March

16A High Street, Thames Ditton
T: 0208 398 9333 E: info@theartbuyer.co.uk
www.theartbuyer.co.uk

‘Knit and Natter’ at Talbot House Café



Neil, right, and student David

On Tuesday mornings (10am-12noon) you can find me, along with my amazing students, running the Talbot House Café at St Nicholas church hall. The café has been running for around a year and half now and is a collaboration between St Nicholas’, Elmbridge Foodbank and St Philip’s School in Chessington. St Philip’s is part of the Orchard Hill College Academy Trust and caterers for 180 children with a range of additional needs. I was keen to set up the café after I heard that just 4% of adults with a learning difficulty are in paid work. By offering our students a work experience at the café we hope to teach them a range of skills that in time might support them into employment.

The name of the café was inspired by the world-famous Talbot House in Poperinge, Belgium. Set up during the First World War by two army chaplains to offer a safe place, “A Heaven in Hell” for soldiers returning from the nearby Ypres Salient. After the war ended, Talbot House gave rise to the

formation of a Christian charity called Toc H. The principles set out by Toc H of Fairmindedness, Friendship, The Kingdom of God and Service are as relevant today as they’ve ever been.

At the café we aim to offer our guests a warm and welcoming space that can be enjoyed by all. Customers are asked to make a small donation for drinks and cakes, “pay what you can afford” is all we ask. Our coffee and tea is provided by Coffee Bay in Surbiton, who have supported the project from day one.

Recently, we’ve all been very excited about the formation of our new Knitting Group, also held on Tuesday mornings from 10:30 and everyone is welcome. You don’t need any previous experience, as there are several members who are willing to teach you.

We look forward to welcoming you soon.

Neil Mears

KNIT & NATTER

**Bring your knitting for
coffee & cake
(all abilities and ages welcome)**

Talbot House Café, St Nicholas Church
Hall, KT7 0QQ
Tuesdays 10.30am – 12 noon





Join us on Sundays!

worship | preaching | king's kids | little sparks creche

10:30AM

Speer Road, KT7 0PN

Visit our website
www.kingschurch.com

Follow us on Instagram
[@kingschurchkingston](https://www.instagram.com/kingschurchkingston)



JET-WASH JEFF

RESIDENTIAL
DOMESTIC
COMMERCIAL

- PATIOS
- PATHS
- STEPS
- DRIVEWAYS
- WALLS
- ...and more

Call us and we'll pop
around to give you a
quote - no obligation



CALL 07905556706
jr48@hotmail.co.uk



Dittons Skiff and Punting Club is 100!

Since 1923, we have kept the traditional Thames sports of skiffing and punting alive, right here in Thames Ditton.

Our club house has a gym, bar and a balcony with fabulous river views. With lots planned for our Centenary year, on and off the river, it's a great time to join us!

We are pleased to welcome new members, of all ages and fitness levels, no experience necessary.

Join our Learn to Row or Punt courses, or from 25 May
come along to a Thursday evening Taster Session.
Visit our website to find out more.

www.dittons.org.uk

 [dittonsskiffandpunting](https://www.instagram.com/dittonsskiffandpunting)

Meet your distributors - Nell Nockles



Your copy of Thames Ditton Today was put through your letterbox by one of our team of loyal distributors. Who are they and what are they up to when they are not pounding the streets of Thames Ditton, Weston Green or East Molesey delivering magazines?

Nell delivers to Riverside Avenue.

How and when did you start living in East Molesey?

Our first home was in Wimbledon. In 1970, we moved to Riverside Avenue by the river Ember, which was a sleepy river prone to flooding. Around 1976, the Thames Water Authority completed their flood alleviation scheme and our Ember is now 80ft wide and 8ft deep! As a result of straightening the river some of Riverside Avenue residents share a communal space called 'Will O' The Wisp'.

Why are you a distributor?

I am proud to deliver the magazine to our community.

A brief 'potted biography'?

I was born in Cleveland, Ohio. My husband, Tony, is British and worked in the USA for two years, we met and married in Cleveland in 1968. We have three children and five grandchildren who live in Seattle and North London. I worked as an art teacher but 30 years ago I had to give up teaching because of my increasing asthmatic condition.

At the same time in 1996, I saw a programme by Dr Jill Warner, Trustee of Asthma UK, and learned that house dust mites were a cause of asthma and should



Nell Nockles, with anti-house-dust mite sign

be avoided. I removed the mites from my bed by sleeping on an air mattress and this probably saved my life. Excited by my improved health I set out to inform others.

With the help of my family, I invented the 'Pilgrim Bed for Asthmatic Children' which housed an air mattress. We founded a private limited company, the only one ever to be financially supported by the NHS.

Working with local GP surgeries, 20 asthmatic children took part in a successful clinical study using our bed. Sadly, the bed was not commercially viable but I continued to educate people on the danger from mites.

I was a consultant on the Channel 4 programme 'How to Beat Your Kids' Asthma' and with my family featured in a TV programme named 'I Wish I'd Thought of That'.

My long medical journey started at The

Liberating Dental and Aesthetic Treatments at Weston Cottage

IMPROVE YOUR SMILE
Teeth Whitening and Invisalign

PROTECT YOUR SMILE
Routine Check-Up and Hygiene Treatments

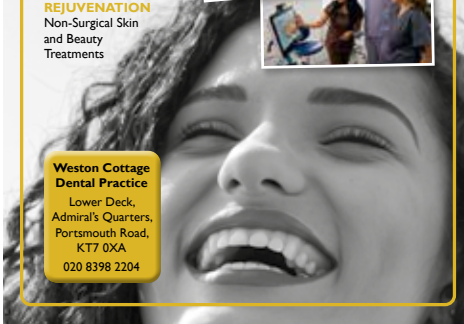
REPAIR YOUR SMILE
Implants, Root Canals, Fillings and more

FACIAL REJUVENATION
Non-Surgical Skin and Beauty Treatments

Weston Cottage
DENTAL PRACTICE



Weston Cottage Dental Practice
Lower Deck,
Admiral's Quarters,
Portsmouth Road,
KT7 0XA
020 8398 2204



Antique Clock Restoration & Repair

Specialising in Grandfather, Dial, Bracket and Carriage Clocks

Contact: Mark Rowe M.B.H.I
BADA Diploma. Member of the Watch & Clockmakers Guild. West Dean Diploma.



Tel: 020 8605 0331

www.theclockgallery.co.uk

Additional Restoration services available for Watches, Books, Ceramics and Fine Furniture. Antique Clocks also bought and sold.



MOORE
By Design

PROFESSIONAL KITCHEN DESIGN

The Hersham Centre, **Hersham**

T: 01932 379076

New online gallery with 150 images...

www.moorebydesign.co.uk

Karen's Angels

The All Needs Carers



Karen's Angels is a friendly local care company, operating in Surrey.

We provide professional 24 hour care, social and personal care services.

We are very proud of the excellent reputation we continue to achieve with our customers, their families, local authorities, GP's and DN's.

For further information please contact

Karen

02082247848

07760220604

British Library, trolling through past and present research on dust mites and then on to membership at The Royal Society of Medicine, listening to lectures.

What hobbies and activities do you enjoy?

My passion and work has been, and still is, researching the house dust mite! I continue to study and spread information about allergen recognition and avoidance via my website *housedustmite.com* and Twitter. I administer and update both on an almost daily basis.

I grew up loving art and I paint Icons using traditional techniques. One of my pieces, which I did with the help of a monk, hung in St Nicholas' church for several months.



Icon

I am a past member of Thames Ditton Women's' Institute and I am proud to say the Surrey WI actively supported me in my campaign to bring back allergy testing to children in GP surgeries.

Is there one thing that perhaps people don't know about you?

I used to love fishing, and I was pretty good at it, but one day somebody said "Why give the fish a sore mouth?" There is no answer. So, I gave up fishing!

QUICK FIRE QUESTIONS

Pub or Restaurant?

Probably pubs – we love Marney's and going to The George and Dragon for sporting occasions on TV, especially rugby. Tony played until he was 48!

Eat In or Eat Out?

We are regular visitors to 'Five At the Bridge', a coffee shop on Bridge Road.

Holiday Home or Away?

We visit our family in Seattle but otherwise travel is not needed – we have so much fun here!

Making Music or Listening?

I love music but don't sing - somebody has to listen!

The Best Thing About East Molesey?

The river!

Pat Cooke



Brighten up your Garden!

Is your garden in need of a makeover?
From planting plans to a simple injection of colour

Green Room Garden Designs can help
020 8398 5703

Anna 07801 921166 – Kate 07956 641881
RHS and Merrist Wood Qualified

Discover Home of Compassion

Home of Compassion Care Home is a Grade II listed mansion in the village of Thames Ditton, Surrey.



Providing residential, nursing and dementia care on a permanent and short stay basis.

Quality care and residents' wellbeing are at the core of Home of Compassion. An outstanding place of beauty that offers residential, nursing and specialist dementia care for elderly residents within a restored and extended 18th Century Grade II listed mansion. Our luxurious living environment is home for up to 78 residents in a unique setting of approximately 2.5 acres on the bank of the River Thames in Surrey, overlooking the grounds of Hampton Court.

Care and Compassion

We are dedicated to providing dignified and respectful residential, nursing and dementia care. What matters



I would
recommend the
Home of Compassion
for anyone needing
respite care.

Respite resident

most to us is the wellbeing of each of our residents, whatever their circumstances, whatever their needs. We are not here to take over lives, we are here to help live them, and we are always on hand with discreet assistance when required.

Comfort and Wellbeing of Residents

The main house boasts grand reception rooms including the magnificent first floor library and ground floor cinema room, private dining room, lounge and hair salon. There is a dedicated activities room with an extensive programme of events for residents' health and wellbeing, with chair aerobics and gardening club being particular favourites.

Customer service is crucial to the success of resident comfort and wellbeing. The Hotel Services Manager and team provide a 24-hour service and our menus use seasonal and local produce – some of which is



Explore the magnificent first floor library with comfy armchairs and a quiet space to read.



Host a dinner party or have afternoon tea with friends and family in the private dining room.

grown in our very own vegetable garden - forming the basis of the extensive restaurant-grade menus. Room service is also available, with a selection of lighter meals and snacks. A concierge service attends to a host of other requirements from ordering flowers and arranging dry cleaning to booking theatre tickets.

Choice and independence

When it comes to individual bedrooms, we help our residents to put their unique stamp on their room and keep things just how they like them. All bedrooms are ensuite and have delightful furniture and furnishings. Our home is surrounded by beautiful landscaped gardens with several rooms having access to the gardens directly from their room.

Our bistro is perfect for socialising with family and friends and has a kitchen areas for making drinks. If you prefer to have some alone time, you can explore quiet nooks with comfy armchairs, classic novels and books on the shelves. To keep the mind sharp you'll find board games, cards and puzzles too - there's plenty to keep our residents engaged if they choose.

Proud to be 'Good'

Caring Homes and the Team at Home of Compassion are delighted that, The Care Quality Commission (CQC), have awarded the home with the rating of 'Good' in all five key inspection areas for being safe, effective, responsive and well-led.

Offering permanent and short stays. Contact us to find out more or to book a show round. Call freephone 0808 223 5388 or search 'Home of Compassion'.



You'll be in good company at Home of Compassion.



You'll receive a very warm welcome in our stunning reception area.

Book a short stay at Home of Compassion



Scan to find out more

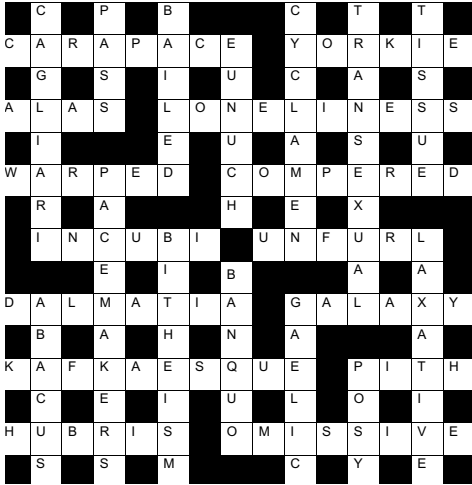
Search 'Home of Compassion'
Freephone 0808 223 5388

58 High Street, Thames Ditton, Surrey KT7 0TT

Home of Compassion

Thames Ditton

Solution to the Winter Crossword



Congratulations to the senders of the first three correct entries opened in the shuffle.

Each wins a £5 voucher to spend in local shops.

Carol Dickinson
130 Ember Lane,
KT10 8EJ




Simon Simpson,
18 Lower Green Road,
KT10 8HD

Ashley Tilling
32 Holme Close
KT13 0BZ

DENNY'S BOOKS

- BOOKS, CARDS, AND GIFTS
- BOOKS AVAILABLE TO ORDER
- 10% DISCOUNT FOR BOOK CLUBS
- 10% STUDENT DISCOUNT
- NATIONAL BOOK TOKENS ACCEPTED



 @DENNY'SBOOKSTORE
 @DENNY'SBOOKS
 HELLO@DENNY'SBOOKS.COM

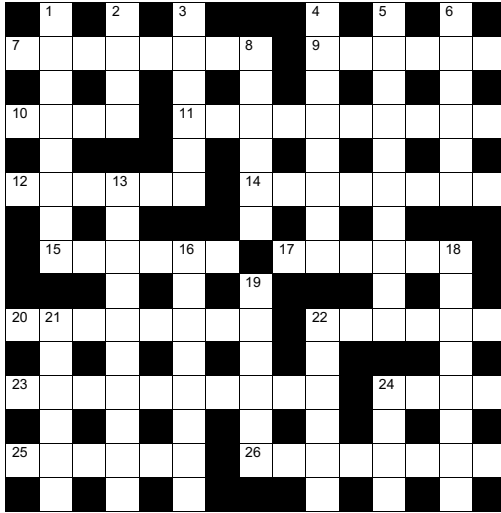
THE ANNEXE
 2 STATION ROAD
 THAMES DITTON
 KT7 0NR




Holiday Clubs Parties After School clubs

3rd- 14th April
Holiday Clubs
 Monday - Friday 9am and 1pm 3hr sessions
www.craftmyday.com

Spring Crossword



by **Howard and Bob Cruthers**

The first three correct entries randomly opened after the closing date of April 5 2023, will win a £5 voucher to spend in local shops.

Please send the completed puzzle (or photocopy) enclosing your name and address, with the envelope clearly marked 'Crossword Competition' to:

Thames Ditton Today
Crossword Competition
24 High Street
Thames Ditton
KT7 0RY

ACROSS CLUES

- 7 Rhythms (8)
- 9 Armoured ungulates (abbrev) (6)
- 10 Peel (4)
- 11 Morose (10)
- 12 Steal fruit from an orchard (6)
- 14 Lively – like Mickey Mouse? (8)
- 15 Medicine causing vomiting (6)
- 17 Misrepresented (6)
- 20 Huge (8)
- 22 Shed (6)
- 23 Burden (10)
- 24 Profanity (4)
- 25 Montana's capital (6)
- 26 Exerting a strong attractive power (8)

DOWN CLUES

- 1 Lumbago (8)
- 2 Intend, to be nasty? (4)
- 3 Tedious journey (6)
- 4 Sideways (8)
- 5 Simplistic art movement, originating in the 1950s (10)
- 6 Book about noise level? (6)
- 8 Two-wheeled electric vehicle (6)
- 13 Of a failed ordnance (10)
- 16 Hostile, unfavourable (8)
- 18 Violated (anag) – joint (8)
- 19 Valuing in reference to one's personal interest alone (6)
- 21 Hinder picnic basket? (6)
- 22 Go back on (6)
- 24 Presage of 1976 horror film? (4)

SERVICES, CLUBS, SOCIETIES AND GROUPS

SERVICES

Cheer (Concern and Help for East Elmbridge Retired)	Manager	01372 879321
Dittons & Weston Green NeighbourCare	Frankie Bell	07790 472993
Elmbridge Borough Council Community Support Services		
Thames Ditton Centre for the community	Mon & Thurs	0208 3985921
Thames Ditton Dementia Centre	Nikki Harding	01372 474526
Meals on Wheels, Community Transport, Dial-a-Ride, Alarm & Telecare services, Relief Carers	ask for service at central switchboard	01372 474552
Homesupport Elmbridge	Thomasina Breslin	01932 267128
Esher and District Stroke Club	Ann Pollock	0208398 6132
Voluntary Action Elmbridge	Sally Dubery	01372 463587
Surrey Youth and Adult Education Service	Elmbridge Area	020 8979 8334

GROUPS

1st Thames Ditton Brownies	Bronach Hughes	bronachhughes@hotmail.com
3rd Thames Ditton Brownies	Emily Wattret	3rdthamesdittonbrownies@gmail.com
1st Weston Green (All Saints) Scout Group	Carole Needham	gsl@westongreenscouts.org.uk
1st Weston Green Guides	Sumathi Jeevaratnam	sumathi.jeevaratnam@gmail.com
2nd Weston Green Guides		2wgguides@gmail.com
2nd Thames Ditton Guides	Bronach Hughes	bronachhughes@hotmail.com
1st Weston Green Brownies (All Saints)		1wgbrownies@gmail.com
3rd Weston Green Brownies		3wgbrownies@gmail.com
1st Weston Green Rainbows	Lizzie Owen	westongreenrainbows@gmail.com
4th Thames Ditton Ajax Sea Scouts	Alison Derrick	020 8398 0041
Dittons Scout Group	Stuart Jack	07971 479740
Emberbrook Trefoil Guild	Mary Bowen	020 8398 6857
Friends of Bushey and Home Parks	Jean Smith	020 8977 9391
Girlguiding in Thames Ditton and Weston Green		dittonsdistrict.hjh@gmail.com
Molesey and Dittons Neighbourhood Watch	Chairman: John Haberfield	020 8398 5256
Parents and Toddlers(St Nicholas church)	Information	020 8398 7211
Ripieno Choir	Nick Harris	020 8399 7231
Surrey Bell-ringers	Giles Andre	020 8979 1994
Bereavement Café	St Nicholas Church Hall	020 8398 9641

CLUBS

Albany Motor Yacht Club	Secretary	01784466651
All Saints Weston Lunch Club	Alison Cruthers	07957 347170
Arts and Heritage Club	Carol Butcher	01932 867511
Cercle Francais d'Esher	Brigitte Tiller	01932 860842 brigitte@ptiller.com
Claygate Bridge Club	Hon. Secretary	020 8398 1710
Colets Health & Fitness	Giordano Orsini	020 8398 7108
Ditton Bridge Club	John Dagnall	02083984463
Dittons Skiff and Punting Club	Secretary	enquiries@dittons.org.uk
Dittons & Hinchley Wood Royal British Legion	Hon Secretary	020 8398 6263
Ember Players (Drama) Ember Sports Club	Elaine Sesemann	07801 943392
Ember Sports Club	Zenda Hedges	07717 304146

Ember Sports Club: Bowls	Sylvia Jones	01932 788701
Ember Sports Club: Croquet	Dr. David Cooke	01932 862841
Ember Sports Club: Tennis	Annabel Duncan	0208 786 6318
Esher Bowling Club	Roger Cooper	01372 468109
Esher Bridge Centre	Paul Whicker	01372 460157
Esher 41 and Ex-Round Tablers' Club	Dr. R. Tudor-Williams	020 8398 0108
Long Ditton Cricket Club	Nigel Hardy	020 8398 8361
Long Ditton Garden Club	Heather Harvey	020 8398 2642
Model Railway Society (Hampton Court)	Secretary	01932 241224
Old Cranleighan Rugby Club	Piers Cushing	07790 003731
Old Cranleighan Hockey Club	Simon Marshall (Men)	07801 737695
	Helen Hawes (Ladies)	07771 557900
Probus club, Hinchley Wood & the Dittons	Edmund Woolley	020 8398 3581
Probus Club, Sandown	Julian Rye	01932 976994
Probus Club of Molesey	Roger Marlow	0208 398 5460
Probus Club of Claremont	George Cameron	020 8224 1392
River Club (BMYC)	David Walker	0870 460 3586
Surbiton Croquet Club	Alec Thomas	020 8398 2391
Stragglers Running Club	Andy Howarth	07941 242348
Surbiton Golf Club	Secretary	0208 398 3101
Surbiton Hockey Club	Secretary	020 8398 2401
Thames Ditton Lawn Tennis Club	Rich Simkins	rpsimkins@gmail.com
Thames Ditton & Esher Golf Club	Mark Rodbard	020 8398 1551
Thames Ditton Squash Club (Colets)	Dave Peck	020 8398 7108
Thames Ditton Cricket Club	Geoff Dryden	07813 805 645
		Geoff.Dryden@hotmail.com

SOCIETIES AND ASSOCIATIONS

Civil Service Pensioners' Alliance	Mrs Brenda Denby	0208 398 6054
Ember Choral	Linda Bridges	020 8399 5402
Esher and Molesey Garden Society	Jean Billett	01372 465961
Esher and District Amnesty International	Cherry Eddy (Campaigns)	0208 398 4377
Hampton Court Way Allotment Association	Lettings: Piotr Hennig	020 8398 5358
Long Ditton Youth Club	Toni Izard	07749 633973
Lynwood Allotment Society	Gill Vickers	020 8398 4870
Molesey and District Antiques Society	Linda Lambert	020 8398 1476
NADFAS (Decorative & Fine Arts) Kingston	Mrs. Valerie Windsor	020 8549 9967
Oxshott & Cobham Music Society	Cherry Eddy (Membership)	0208 398 4377
		cherryeddy102@gmail.com
Soroptimist Women	Jean Smith	07770 417814
Thames Ditton Women's Institute (W.I.)	Secretary	020 8398 8615

OTHER

Vera Fletcher Hall	Lettings: Amelia Crafts	08456 528 529
	Membership: Sue Morris	020 8224 0980
Weston Green Conservation Area Advisory Committee		wgcaac@outlook.com

Please contact the Editor to amend these listings



THE THEATRE at the Vera Fletcher Hall

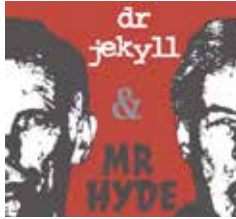
Spring Programme 2023

**Friday 24 March,
7.30pm**

Isosceles Theatre
Company presents ...
the strange case of

*Dr Jekyll and Mr
Hyde*

Tickets £14



**Saturday 15 April,
2:30 pm**

Mysterrasaur ...

Acclaimed puppet
company Idolrich
presents an intriguing
multimedia show for
children and adults

Tickets from £8.00



Earth Day - Saturday April 22, 7.30 pm

Tickets £15 / £10



**Saturday 29 April,
8.00pm**

Into the Breach

One man's battle
with Shakespeare. A
heartwarming drama of
love, war and odd jobs.
written and performed
by Mark Carey.

Tickets £14



Friday 5 May, 7.30pm

Counterpart Duo presents ...



Kick off the Coronation weekend with a
fantastic evening of Musical Theatre featuring
classic Broadway hits

Tickets £16 - £1 of every ticket sold will be
donated to the Thames Ditton Foundation

Saturday 20 May, 8.00pm



Hits from the Blitz with Five Star Swing.

The unique "feel-good" 1940's show. Famous
War-Time tunes & "sing-a-long" songs brought
to life Tickets £20

Friday 9 June, 7.30pm
Foreign Film Night



Saturday 17 June, 8.00 pm

Kemp's Jig Tickets **£15**

Bluefire Theatre presents the
story of Shakespeare's forgotten
clown



JOIN US



GET READY FOR EASTER CAMPS



Family Pass from £28.99 a day



Childcare voucher accepted



CampEngland

Coaching by England Sports Group

SPECIALIST SPORTS CAMPS

- Multi-sports Camp 5-15 years
- Tennis England Camp 5-15 years
- Gymnastics England Camp 5-13 years
- Drama & Dance Camp 4-11 years
- Little Sparrows Early Years Camp 3-4 years
- Total Athlete Camp 11-17 years
- 7 Habits of Highly Effective Teens Camp 13-17 years



LOCATIONS

- East Molesey Imber Court
- Esher Esher High School
- Chertsey Chertsey High School
- Kingston Tiffin Girl's School
- Richmond The German School
- Teddington Bushy Park Sports Club
- Twickenham Orleans Park School



Book your place today online at www.englishsportsgroup.com
Or call our friendly team on 0800 043 0707

Invite a Visiting Angel into your home to care for you and your loved ones

Most people in need of care would prefer to stay in their own home. Our home care visiting service is carefully tailored to suit your loved one's needs, can help them retain their independence and stay connected to friends, relatives and pets.

Our caregivers are carefully selected. We find excellent people with the right mix of skills, experience and a true caring nature, so that they can provide consistently superior home care.

- * Companion & Social Care
- * Personal Care
- * Dementia & Alzheimer's Care
- * Post-Hospital Stay Care
- * Palliative Care
- * End of Life Care



Find out more about how a Visiting Angel can help

Call: 0203 143 4007 or 07923 157 020

www.visiting-angels.co.uk/northsurrey

northsurrey@visiting-angels.co.uk

VisitingAngels® 
QUALITY AT HOME CARE